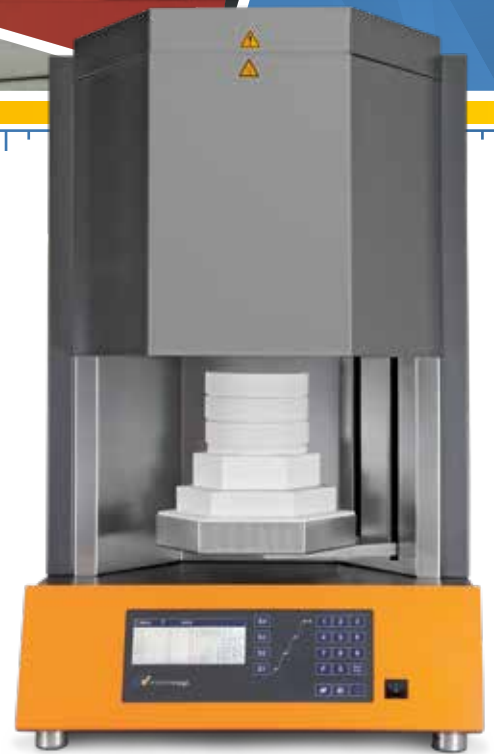




HT-2/M/ZIRKON-120



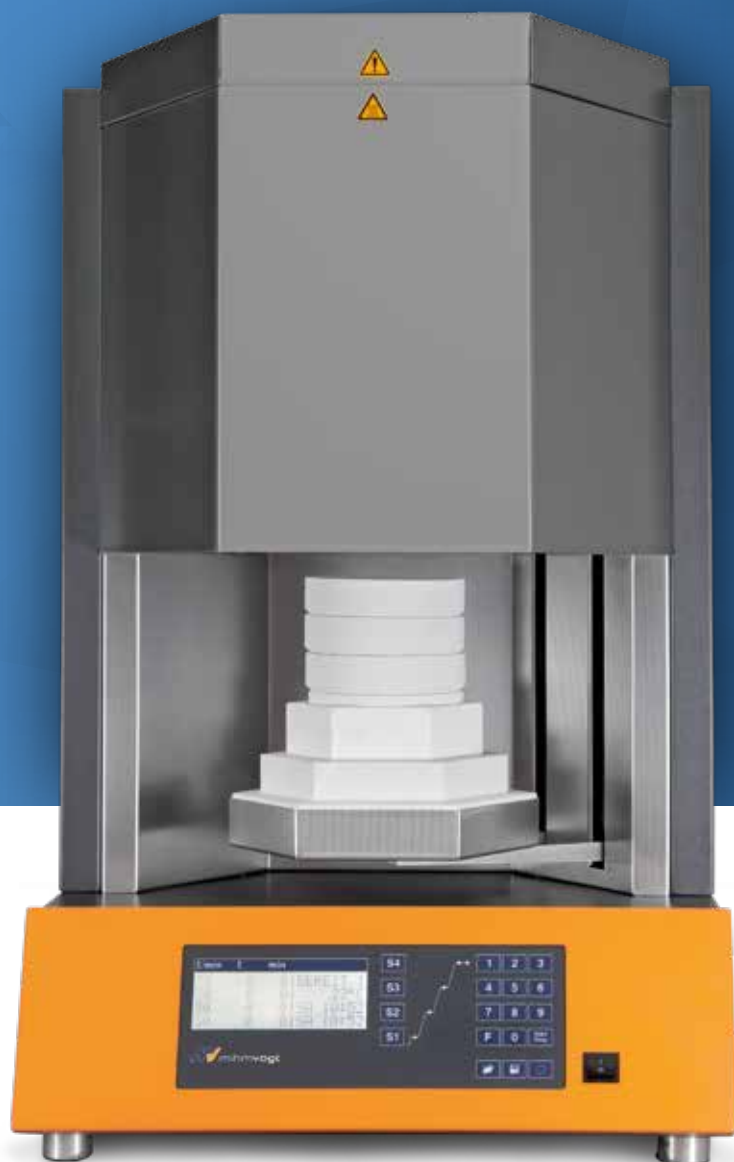
HT-2/M/ZIRKON-120



90 SINGLE CROWNS or SINTERING DISC

- ▼ High purity molybdenum-disilicide heating elements PRO
- ▼ Maximum temperature 1650°C
- ▼ Heating-chamber capacity 3x Ø 120/30 mm
- ▼ Program control
 - LCD-Display
 - 4 stages
 - 30 program capacity
- ▼ Service programs
 - A - Temperature control*
 - C - Purge heating chamber
 - E - Regenerate heating elements
- ▼ Thermocouple PtRh-Pt, type S
- ▼ Temperature accuracy at 1500°C +/- 3 °C
- ▼ Timer function

* only in conjunction with test-kit



RS-232 Interface allows you to record real time program data for analysis or compliance








Technical data	HT-2/M/ZIRKON-120
Power max.	3800 W
Voltage range; frequency	200-240 V; 50/60 Hz
Weight	74 kg
Dimensions W/D/H	500/560/820 mm

Technical data



HT-2/M/ZIRKON-120
7203000001

Details ✓ standard ✗ not compatible

Technical information		
Heating-chamber height	mm	102
Max. heating-chamber capacity	number of trays	 3 x 120/30 mm
Heating system		
Process capability		 
Max. temperature		
Heating elements	type	
	number	6
Process times CLASSIC [1*]		
Max. programmable heating rate	°C/min	30
Shortest heating period to 1.500°C at 230V	min	49
Shortest cooling period to 300°C	min	67
Process duration (incl. holding time 30 min)	min(h)	146(2,4)
Process times SPEED [1*]		
Max. programmable heating rate	°C/min	99
Shortest heating period to 1.500°C at 230V	min	27
Shortest cooling period to 750°C	min	19
Process duration (incl. holding time 30 min)	min(h)	76(1,3)
Programm control		
7-segment LED		✗
4-lines LCD		✓
Number of programmable stages		4
Program capacity		30
	Number of fixed programs	✗
	Number of customizable programs	30
Special programs		
Drying		✓
Heating-up ventilated		✓
Service programs		
A-Temperature control [2*]		✓
C-Purge heating chamber		✓
E-Regenerate heating elements		✓
Thermocouple		
PtRh-Pt, type S		✓
Special functions		
Emergency cooling system		✗
RS 232 interface		✓
Door lift		✓
Shielding-gas supply		✗
Timer function		✓
Technical data		
Power max.	W	3800
Voltage range; frequency	V; Hz	200-240; 50/60
Weight	kg	74
Dimensions W/D/H	mm	500/560/820

[1*] Process values: Sintering temperature = 1500°C; holding time = 30min; 1 x sintering tray [2*] only in conjunction with test-kit

Scope of delivery



HT-2/M/ZIRKON-120
7203000001

- ✓ standard
- optionally available
- ⊙ optionally available, but with reservations
- ✗ not compatible

Sintering tools		
8201000001	Sintered corundum AL, 4-6; 200g	●
8201000002	Sintering beads YTZ, 2.0; 200g	●
8201000003	Sintering beads YTZ, 1.25; 280g	●
8201000004	Sintering granulate YTZ; 200g	✓
8201000008	Sintering tray, 120/30***	✓
8201000010	Sintering tray lid, 120/4***	⊙
8201000011	Sintering tray, intermediate ring 120/35***	●
8201000014	Sintering tray SPEED, 120/30; slotted	✓
8201000015	Sintering tray SPEED, 120/30 (kit)	●
8201000018	Sintering base plate SPEED, 120/15	●
8201000019	Sintering base plate SPEED, top ring 120/15	●
8201000021	Sintering disc, 120/12***	⊙
8203000003	Stacking disc	✓
Accessories		
8202000001	Crucible tongs, 100-120mm	✓
8202000005	Diamond whetstone; for sintering discs	●
8202000008	Power cord EU, C19; 16A	✓
8202000009	Power cord USA, C19; 16A	●
8202000010	Power cord GB, C19; 13A	●

***ATTENTION! Not suitable for SPEED sintering!

**CONSISTENT.
RELIABLE.
PRECISE.**



MIHM-VOGT GmbH & Co. KG
Friedrich-List-Straße 8
76297 Stutensee-Blankenloch
Germany

Web www.mihm-vogt.de
Mail info@mihm-vogt.de